



NORTHERN EDGE

COLLECTION



VOXFLO^R
www.voxflor.com

Shanghai **Headquarters**
T +86 021 62989325

Milano Creative Studio
T +39 3885863150

China **Branch Offices**
Beijing/ Guangzhou/ Shenzhen/ Xiamen



The **Northern Edge Collection** comprises two products, each showcasing a unique design pattern. These patterns, named **Diamond Beach** and **Basalt Canyon**, share a **harmonious color** palette and adding depth and variety to the collection.

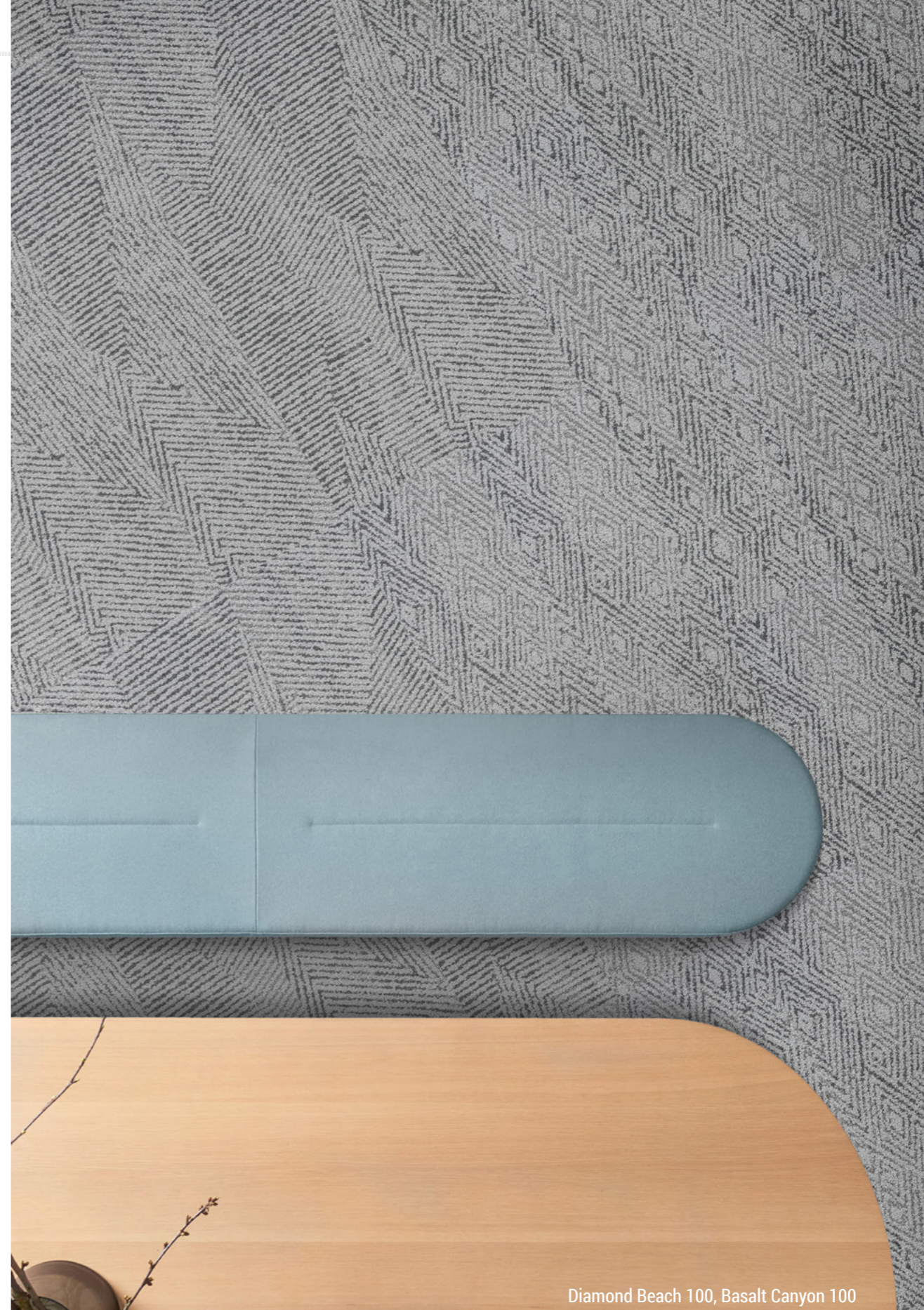
VOXFLO^R
passion and purpose

01.

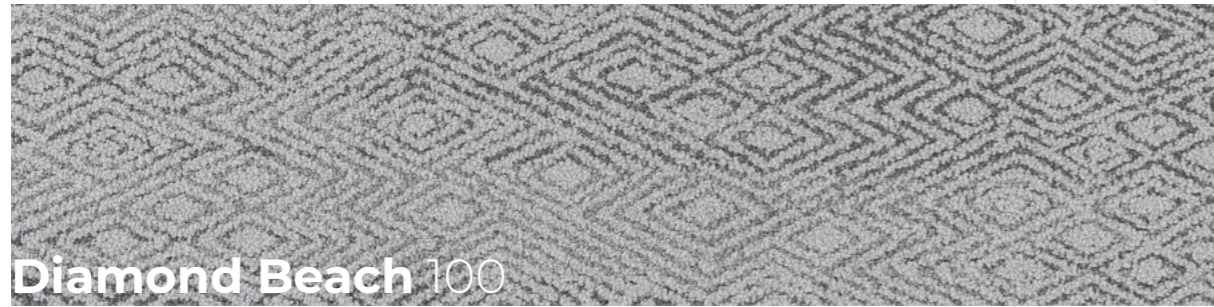
OUR GOAL

Behind the design of our **Northern Edge Collection** lies a **primal need for adventure**. Explore a new continent where the opposites attract each other, exactly as **Diamond Beach** and **Basalt Canyon** represent the ice from the sea and the fire from the Earth Core meeting themselves on a pure land. Find every day **the natural beauty of the world** and start exploring!

VOXFLOOR
MILANO CREATIVE STUDIO



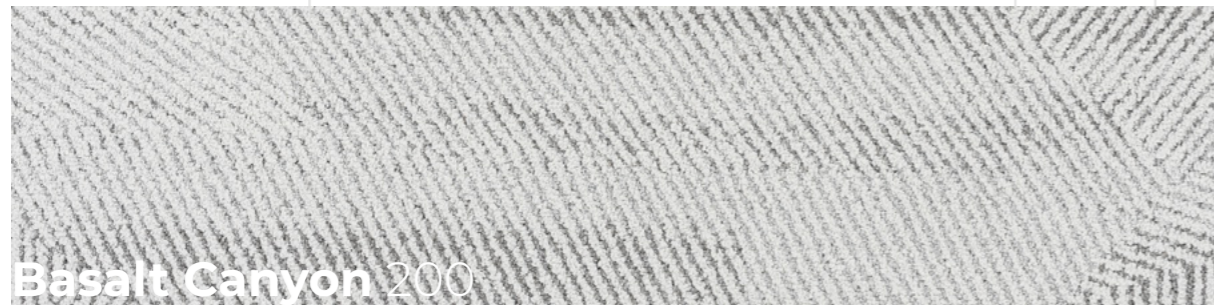
Diamond Beach 100, Basalt Canyon 100



Diamond Beach 100



Northern Edge Carpet Tile Collection provides its **two products** with the **same yarn**, accents and color combinations. Nevertheless, both Diamond Beach and Basalt Canyon keep a **strong and solid visual identity**.



Basalt Canyon 200



Diamond Beach 100, Basalt Canyon 200

02.

DIAMOND BEACH

When the spring comes on the wild northern shore, diamond shaped ice blocks cover the black sand, generating an incredible play of **lights and shadows, colors, reflections and contrasts** that deeply inspired the product pattern. Its **strong geometric** design comes in 4 **different tones of gray** as well as 6 **pastel tone color accents** to create unique strong flooring dynamics for creative and elegant environments.

Diamond Beach, with its creative approach, it is ideal for young spaces - dynamic, striking, innovative and original. It creates a unique effect with its graphic pattern and exciting design in a variety of base colors and fresh accents.

DIAMOND BEACH

ICY ADVENTURES
FOR SEA LOVERS





Diamond Beach 100, 400, Beyond Stones A05



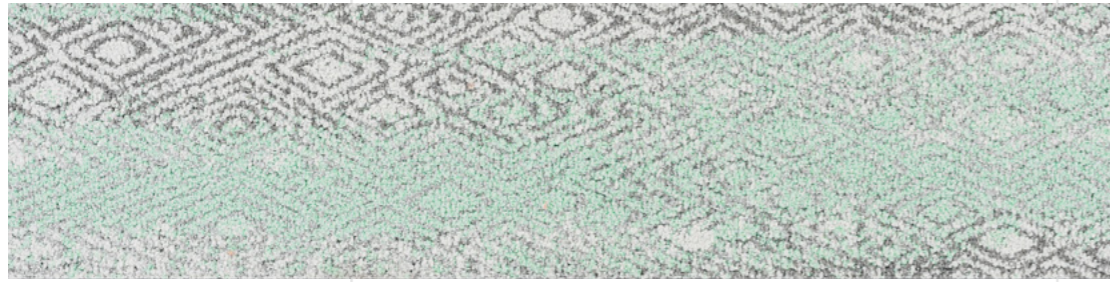
Diamond Beach 200



Diamond Beach 200, 204



Diamond Beach 200



Diamond Beach 204



Diamond Beach 200, 204



Diamond Beach 200, 201, 202, 203



BASALT CANYON

EXPLORING DEEP
THE EARTH CRACKS

03.

BASALT CANYON

Not even the most resistant basaltic rocks can stop the patient flow of the waters. Created centuries ago when incandescent lava met the frozen ocean, today they open up in a series of **rectilinear facets** to let the river pass. Basalt Canyon Carpet Tiles display a patchwork of **linear patterns** in elegant, light, refined, and **sophisticated geometries**.

Basalt Canyon provides a refined, elegant, and sophisticated solution for your flooring needs. The design is both modern and timeless, sophisticated and elegant, ideal for relaxing areas, refined hallways, premium lounges, private offices, and large high-class areas in general.

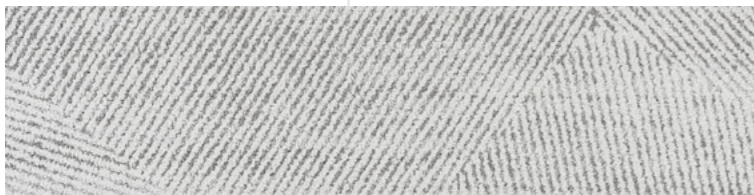


Basalt Canyon 200, 205, 206

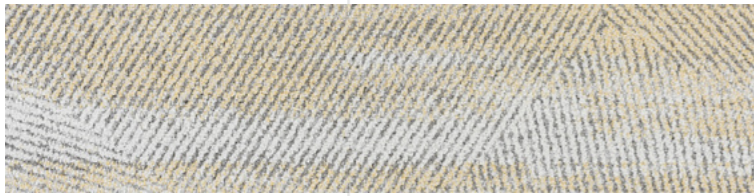


Basalt Canyon 200





Basalt Canyon 200



Basalt Canyon 201



Basalt Canyon 200, 201, Above Woods F06



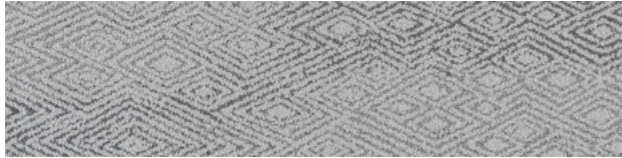
Basalt Canyon 400

Basalt Canyon 100



Basalt Canyon 100, 300, 400

Colors



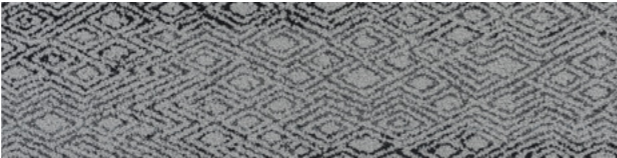
Diamond Beach 100



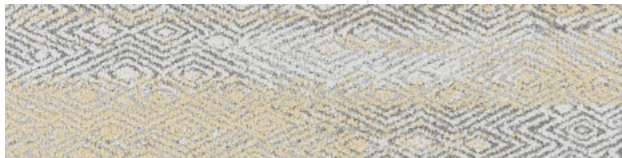
Diamond Beach 300



Diamond Beach 200



Diamond Beach 400



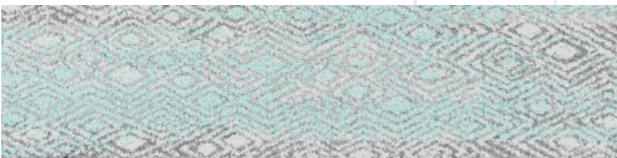
Diamond Beach 201



Diamond Beach 204



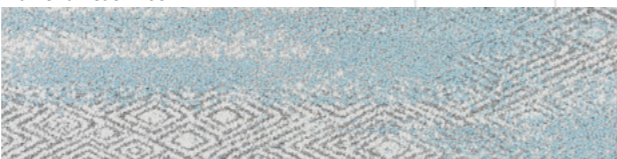
Diamond Beach 202



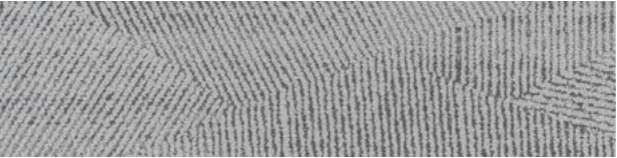
Diamond Beach 205



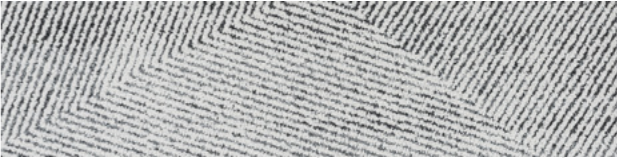
Diamond Beach 203



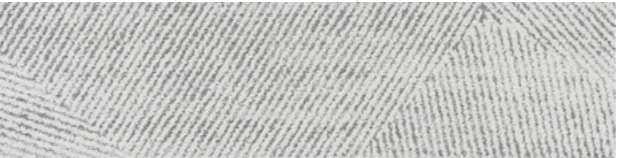
Diamond Beach 206



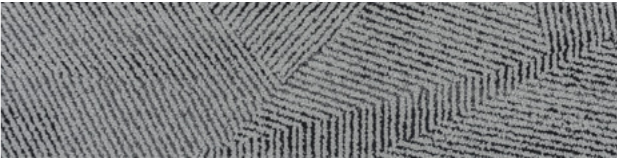
Basalt Canyon 100



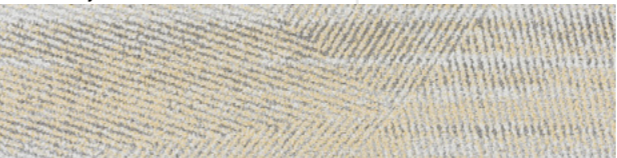
Basalt Canyon 300



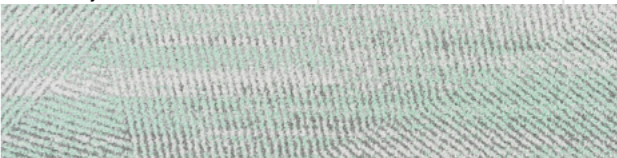
Basalt Canyon 200



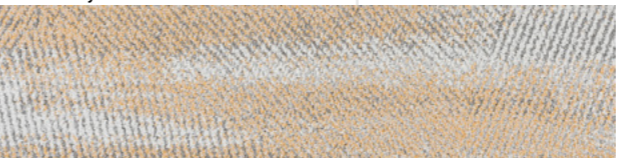
Basalt Canyon 400



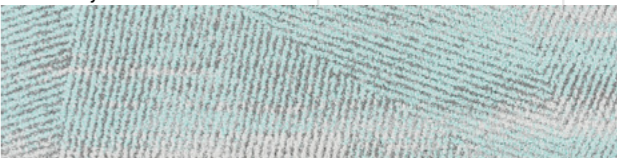
Basalt Canyon 201



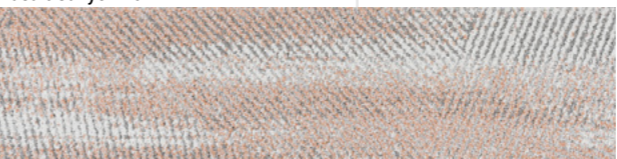
Basalt Canyon 204



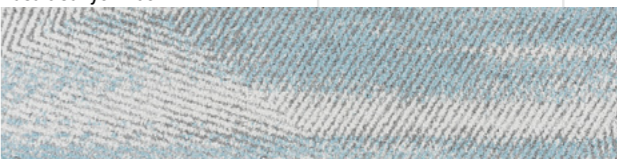
Basalt Canyon 202



Basalt Canyon 205



Basalt Canyon 203



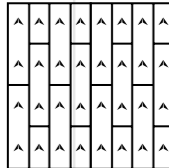
Basalt Canyon 206



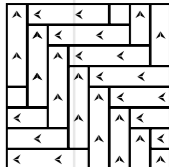
Specifications

Style Name:	Diamond Beach; Basalt Canyon
Construction:	Multi-level Loop
Fiber:	ECONYL® Regenerated Nylon by Aquafil
Gauge:	1/10"
Stitches:	10 per inch
Pile Weight:	28 OZ/yd ²
Average Pile Height:	4.5 ± 0.5mm
Backing:	EcoAce-Bac® PRO
Tile size:	25cm*100cm
Area of Use:	Commercial – Heavy Duty
Anti-microbial:	Ultra-Fresh Treatment (Available) ASTM
Flammability:	E 648 Class I, GB8624-2012 B1(C) ASTM E
Smoke Density:	662 Less than 450, GB/T 8627-1999
Static Propensity:	AATCC-134≤3.5 KV, GB/T 18044-2008

Installation Methods



Ashlar



Herringbone

Manufacture System

SOLAR
made carpet

VOXFLO® builds its own solar power generation system and use clean energy to produce in a sustainable way.



An Environmental Product Declaration (EPD) tells the life cycle story of a product in a single, comprehensive report. The EPD provides information about a product's impact upon the environment, such as global warming potential, smog creation, ozone depletion and water pollution.



Administered by the Singapore Environment Council (SEC) since 1999, It is Singapore's leading environmental standard and certification mark with over 3800 unique products certified across 43 countries.

Credits Contribution to:



LEED (Leadership in Energy and Environmental Design) is the most widely used green building rating system in the world. LEED certification is a globally recognized symbol of sustainability achievement and leadership.



Our manufacture system has been certified under ISO 9001, ISO 14001 and ISO 45001, which means with the management, production facility and the strict quality controls, VOXFLO® represents qualified and trusty products.



EcoAce-Bac®
GLP No. : 100231

Green Label Plus is an independent testing program that identifies carpet, adhesives, and cushion with very low emissions of VOCs to help improve indoor air quality.



VOXFLO® recommends using its own carpet tile tackifier with rust inhibitor. It is an EC-1 PLUS certified adhesive.



Ultra-Fresh is a portfolio of antimicrobial treatments developed by Thomson Research Associates, Inc. Customer can choose this High-Performance Antimicrobial Technology.



WELL is the leading tool for advancing health and well-being in buildings globally. Register your office, building or other space to leverage WELL's flexible framework for improving health and human experience through design.

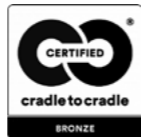


Declare.
Red List Free

Declare is a transparency platform to share and find healthy building products. VOXFLO®'s EcoAce-Bac® Collection reach "Red List Free" grade.

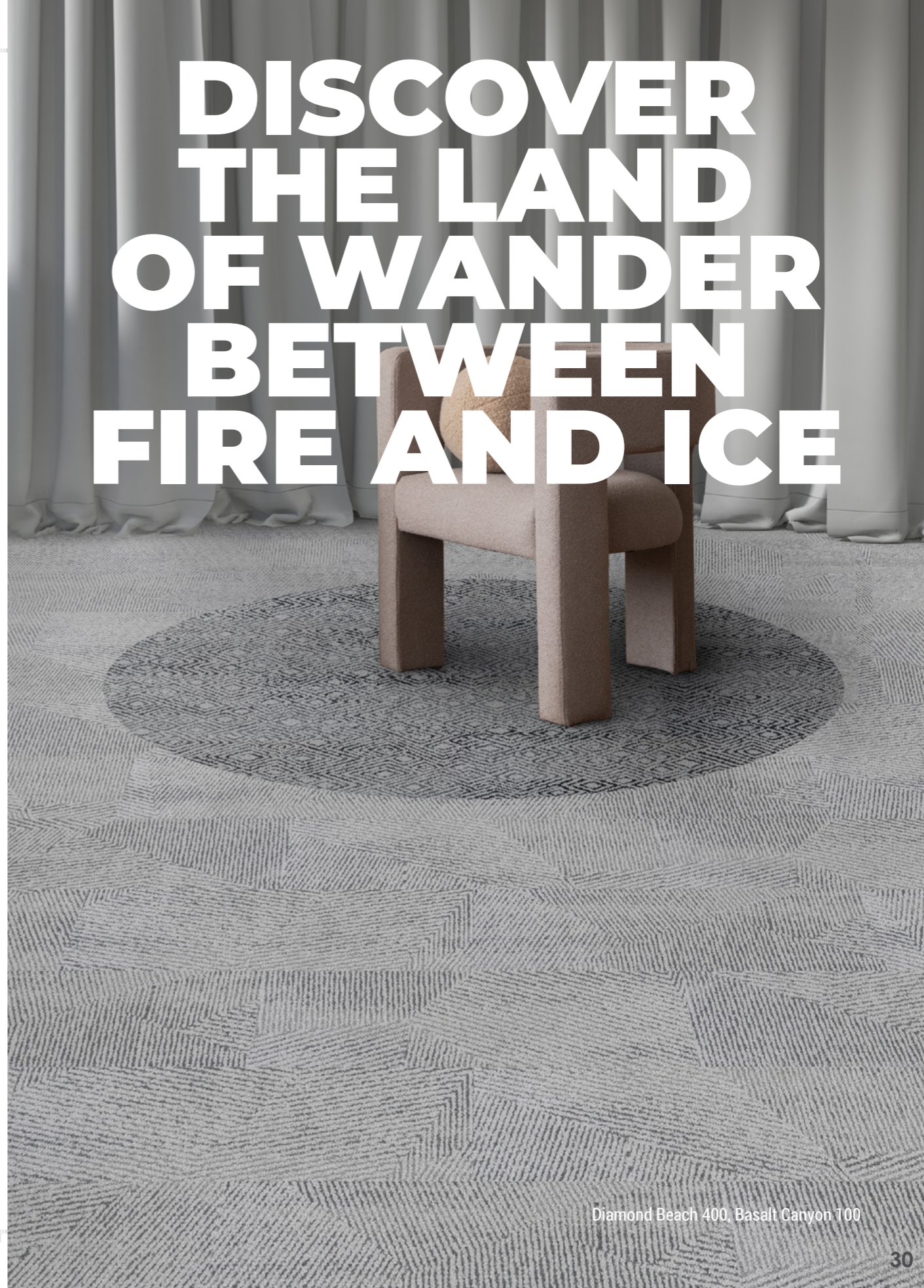


CE marking indicates that a product has been assessed by the manufacturer and deemed to meet EU safety, health and environmental protection requirements.



Cradle to Cradle Certified® is the global standard for products that are safe, circular and responsibly made. It is to ensure the impact of their products on people and planet is a positive one.

DISCOVER THE LAND OF WANDER BETWEEN FIRE AND ICE



Diamond Beach 400, Basalt Canyon 100