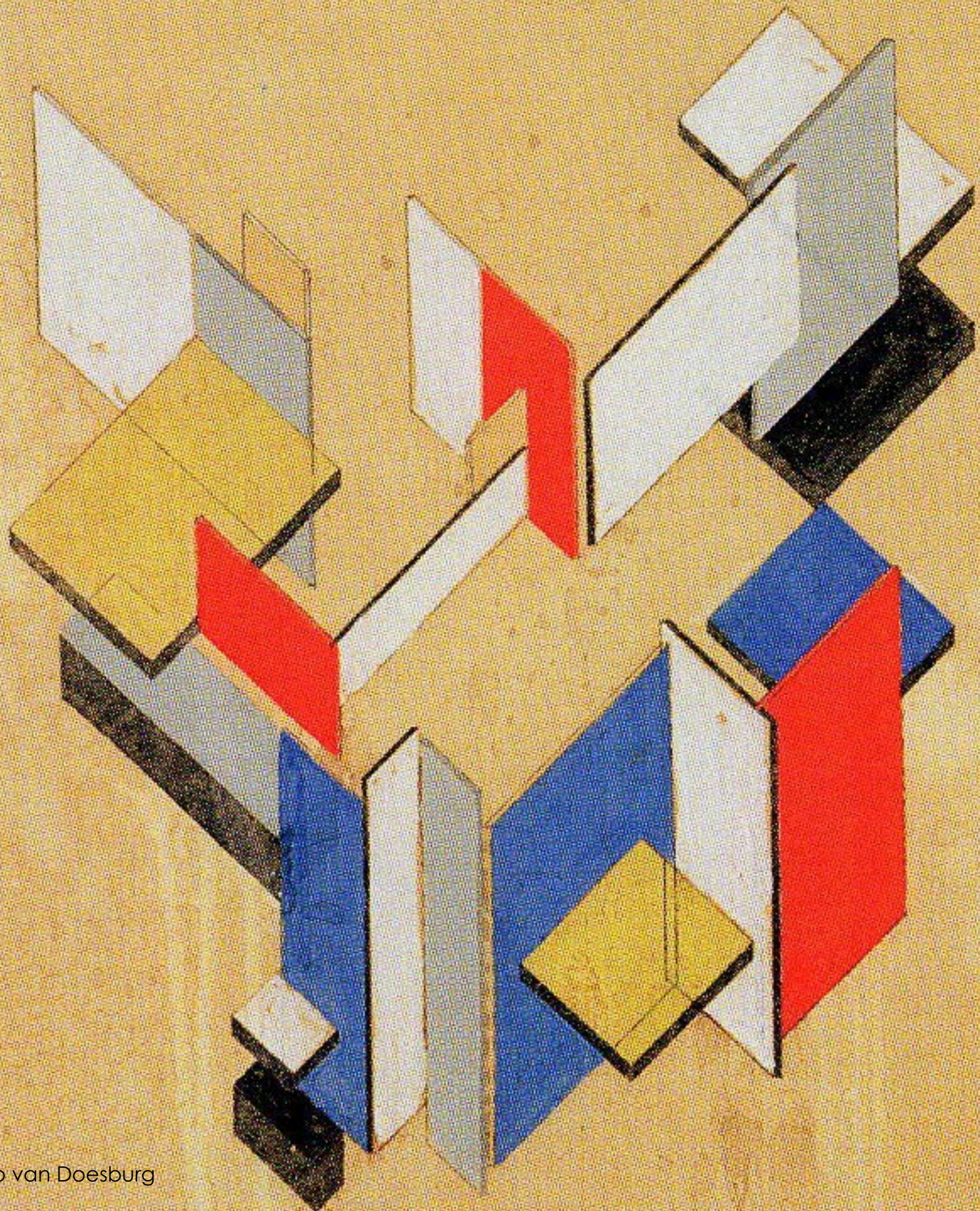


MONDRIAN



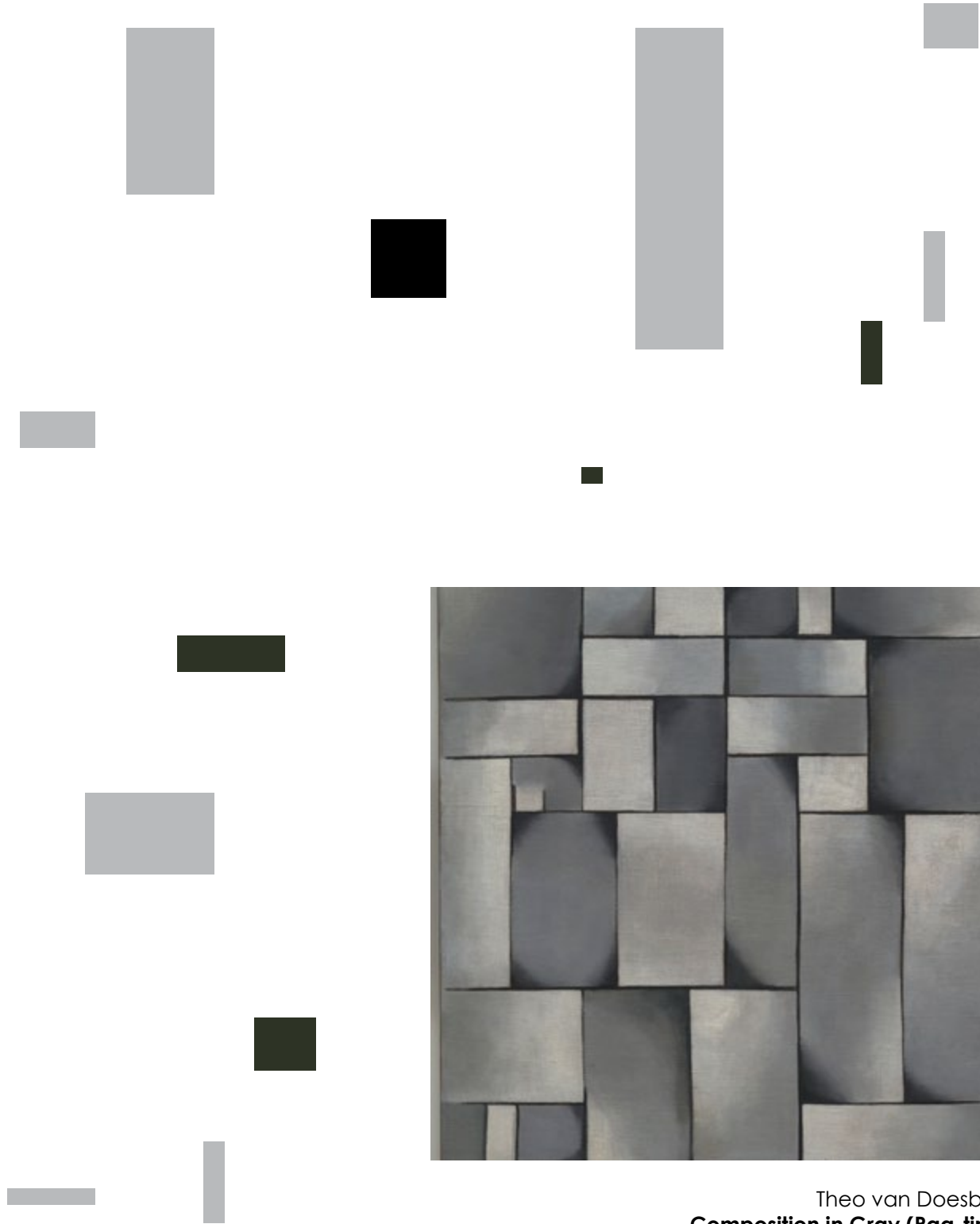
Theo van Doesburg

Everything is expressed through relationship. Colour can exist only through other colours, dimension through other dimensions, position through other positions that oppose them. That is why I regard relationship as the principal thing.

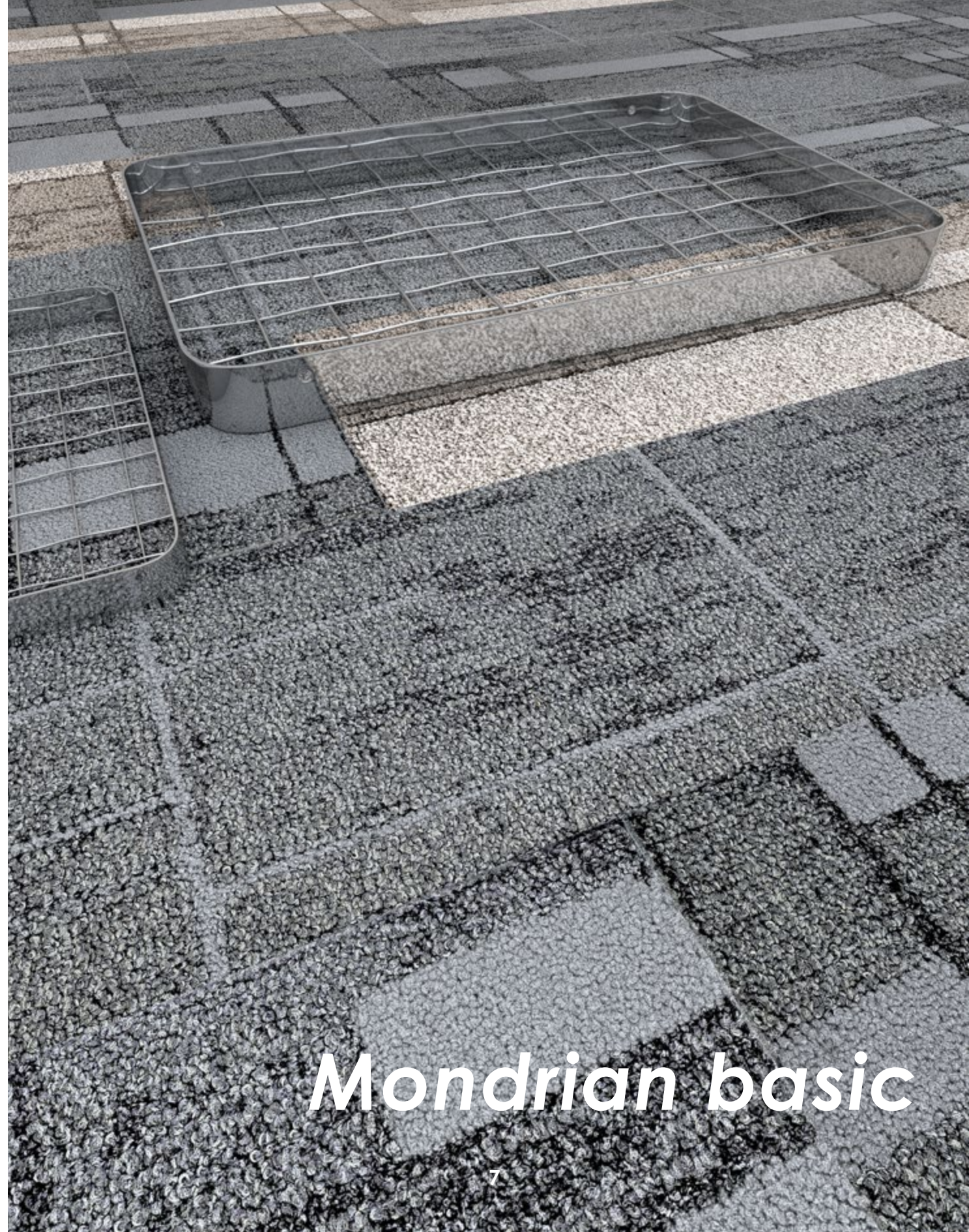
Piet Mondrian



Mondrian 100 75001 75002 75005
Mondrian 300 75002 75004 75005



Theo van Doesburg
Composition in Gray (Rag-time)
1919



Mondrian basic



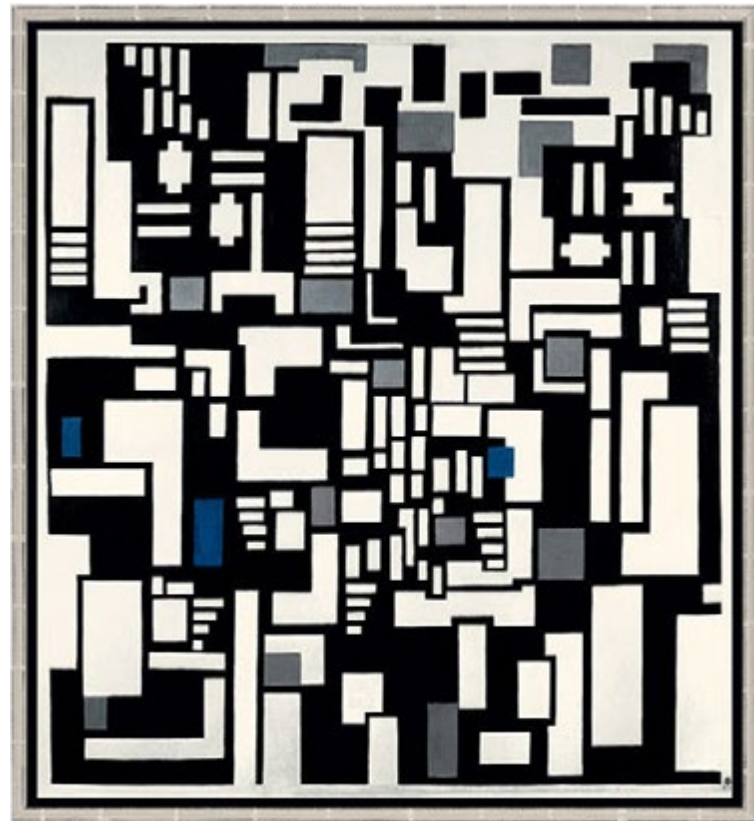
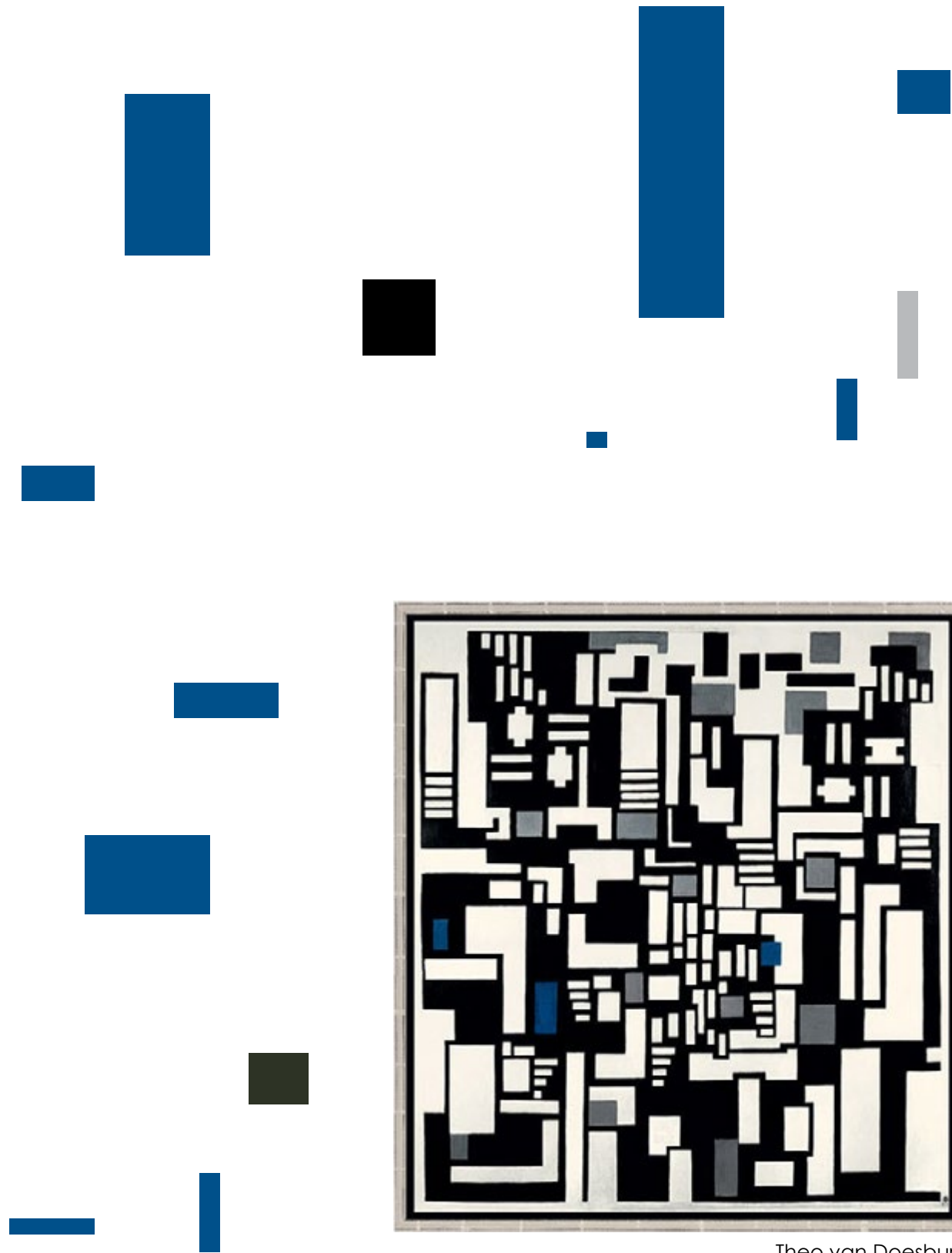
Mondrian 200 75001 basic
Mondrian 200 75004 basic

Mondrian 300 75001 basic
Mondrian 300 75004 basic

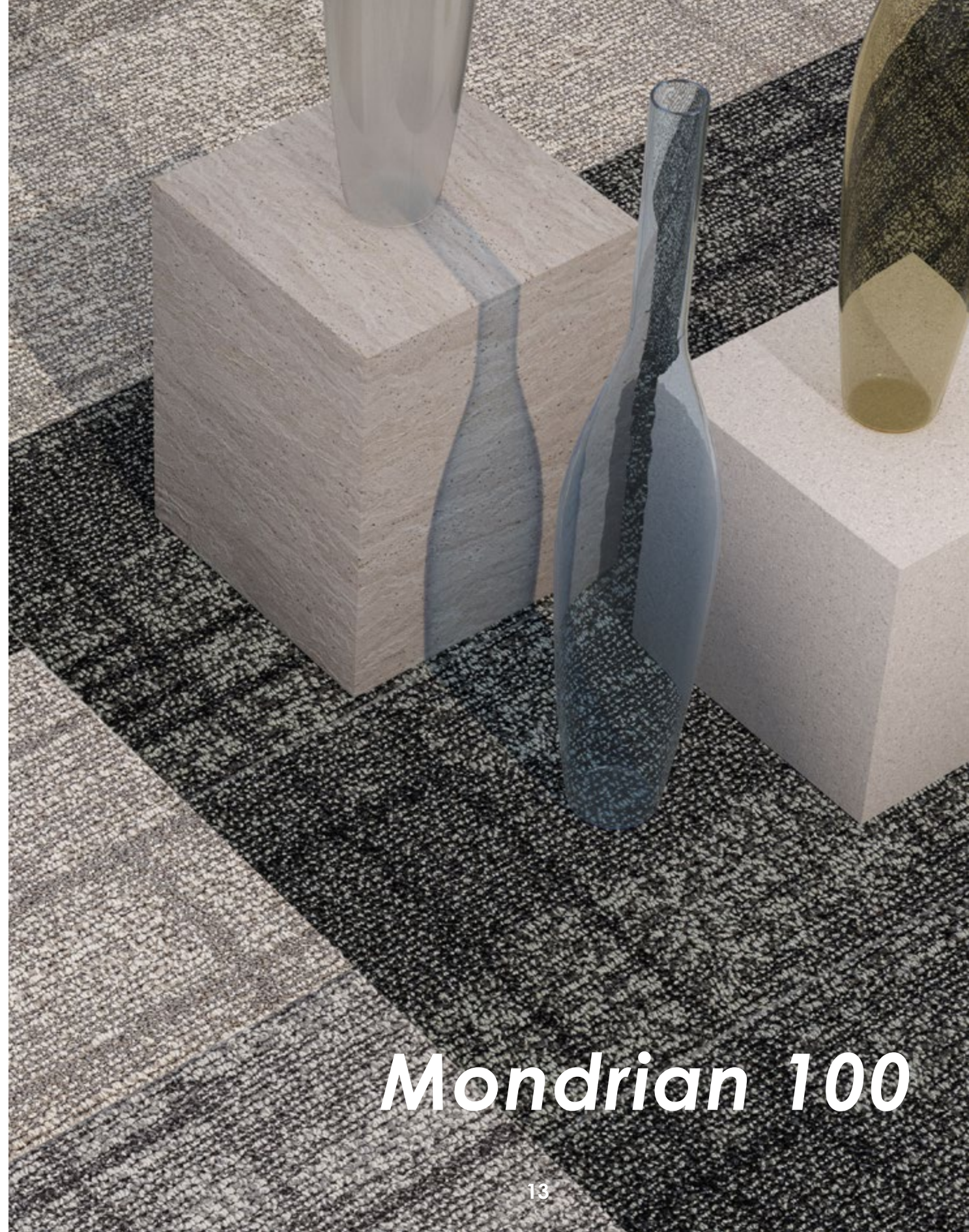


Mondrian 200 75001 basic
Mondrian 200 75004 basic

Mondrian 300 75001 basic
Mondrian 300 75004 basic



Theo van Doesburg
Composition IX
1916



Mondrian 100



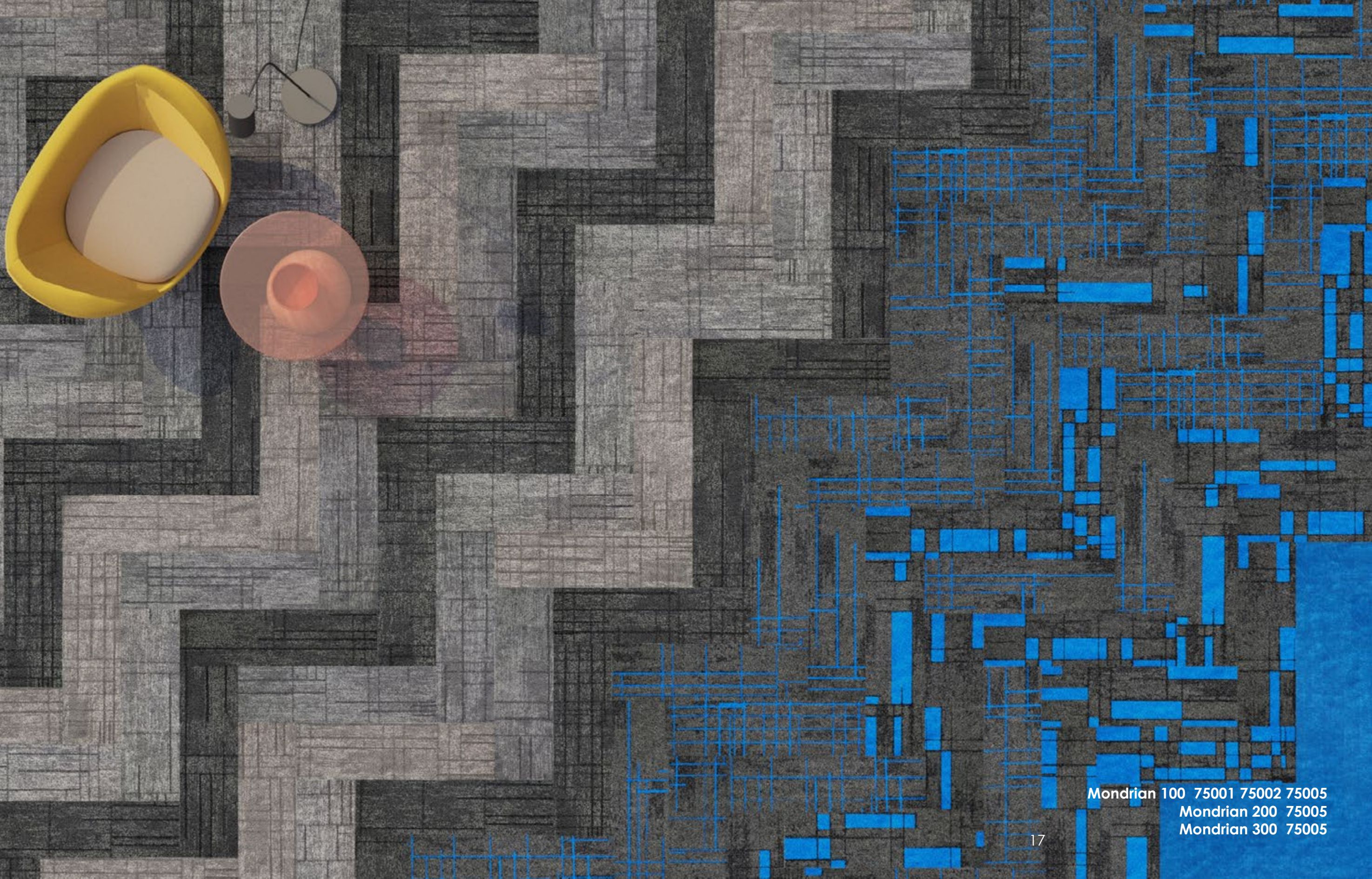
Theo van Doesburg
Counter Composition XIII
1929



Van Doesburg and Rietveld interior
Rijksmuseum, Amsterdam
1919



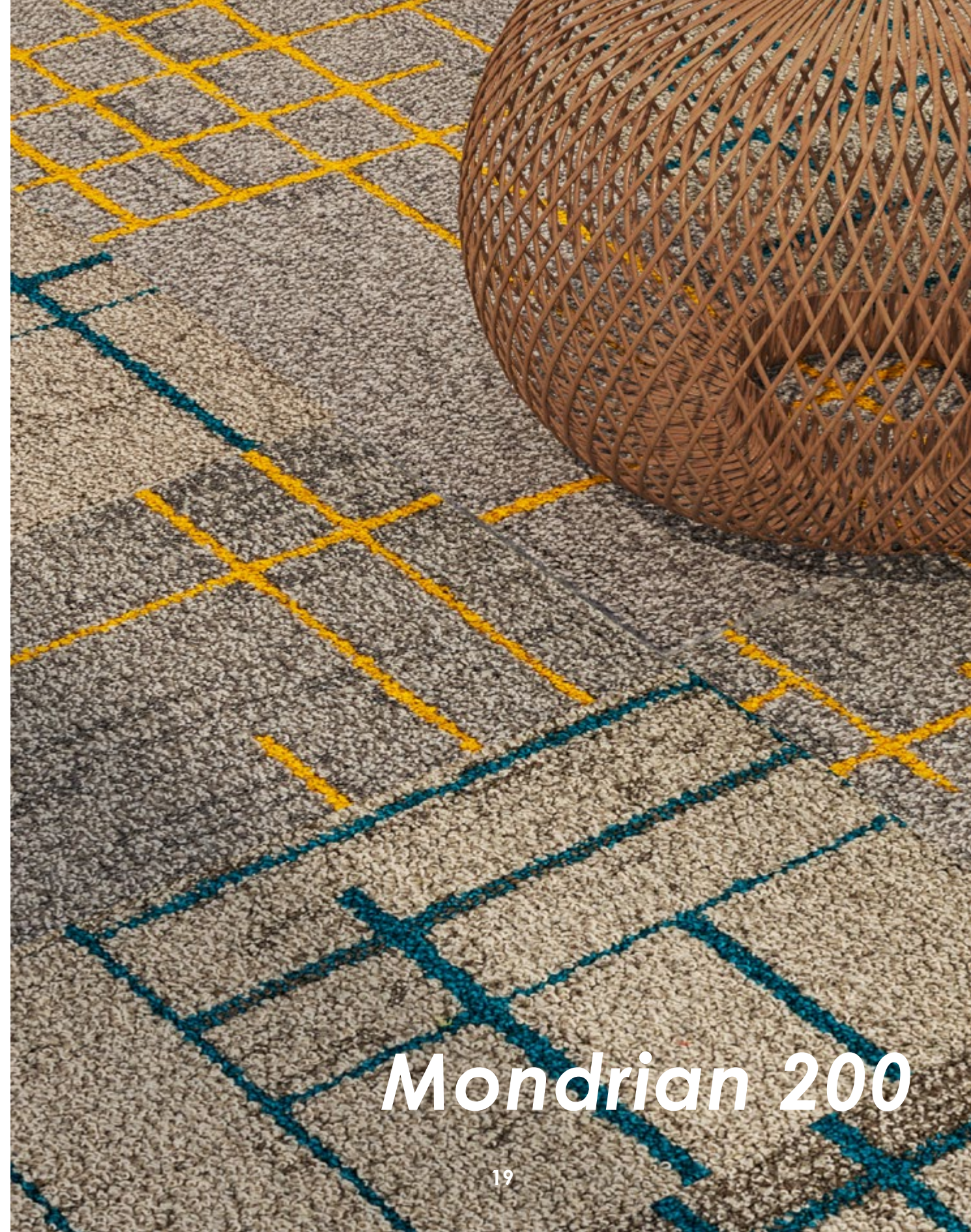
Mondrian 100 75001 75002 75005
Moss 3704



Mondrian 100 75001 75002 75005
Mondrian 200 75005
Mondrian 300 75005



Piet Mondrian
Tableau No. 2/Composition No. VII
1913



Mondrian 200

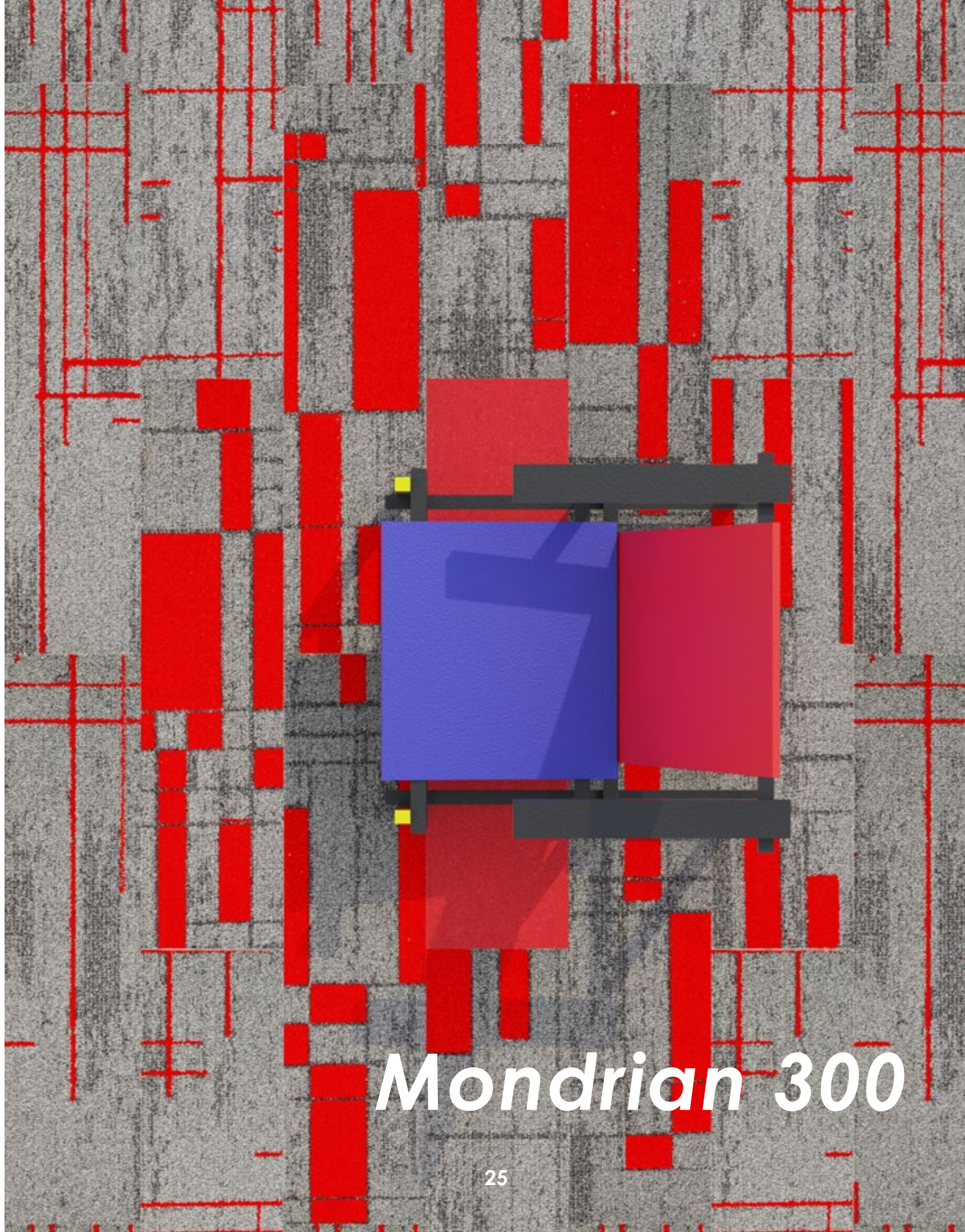




Mondrian 100 75001 75002 75003
Mondrian 200 75001 75002

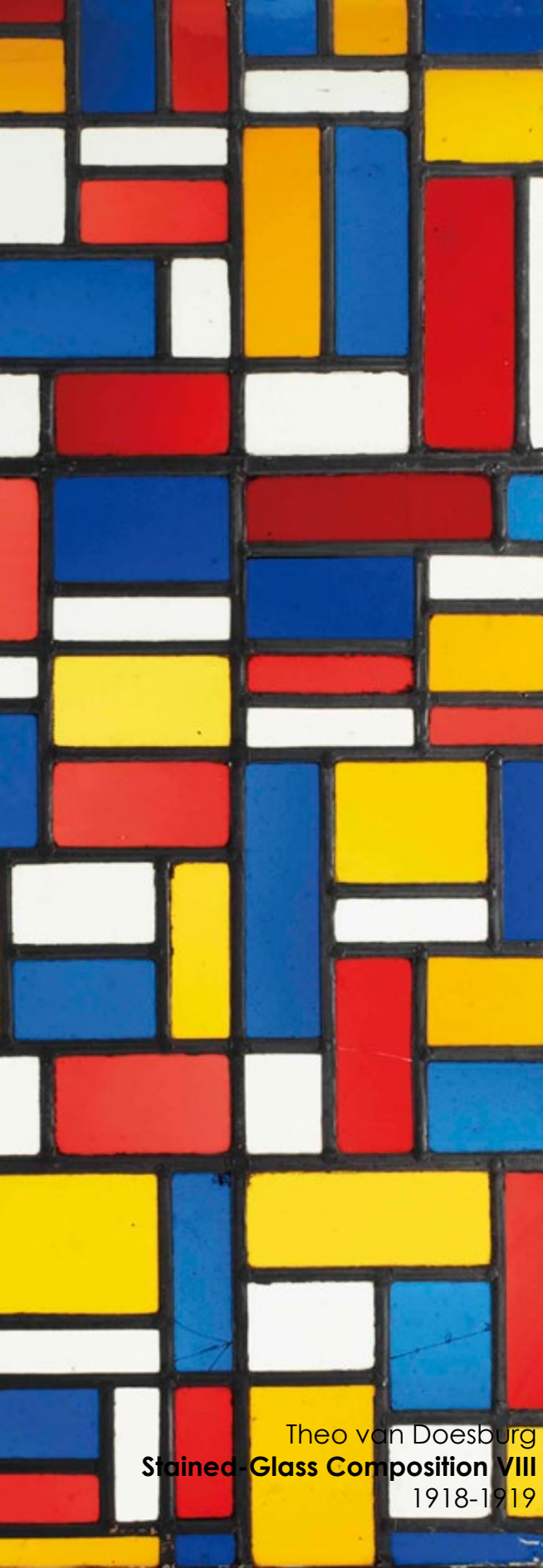


Gerrit Rietveld
Red Blue Chair
1917



Mondrian 300

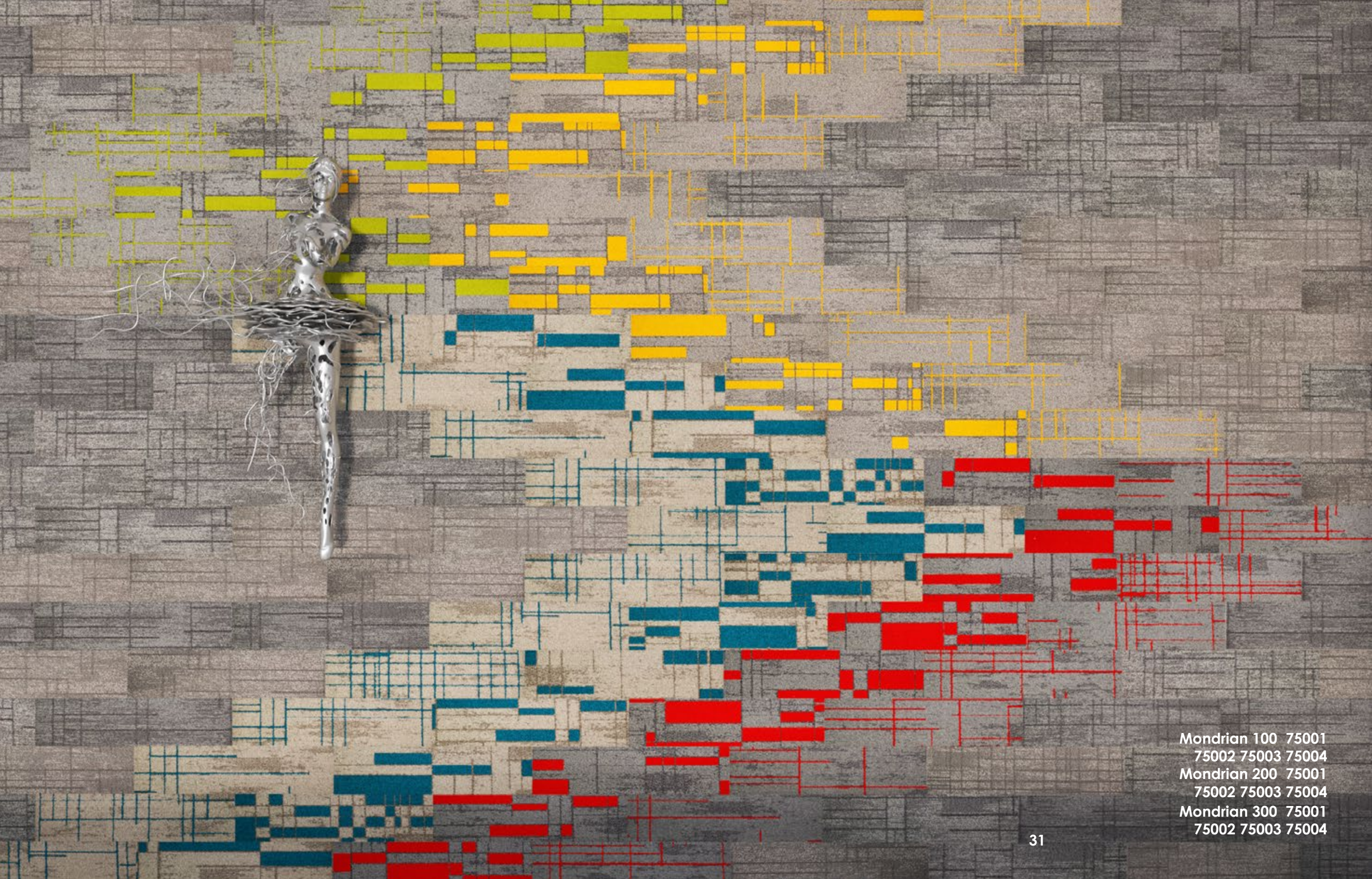




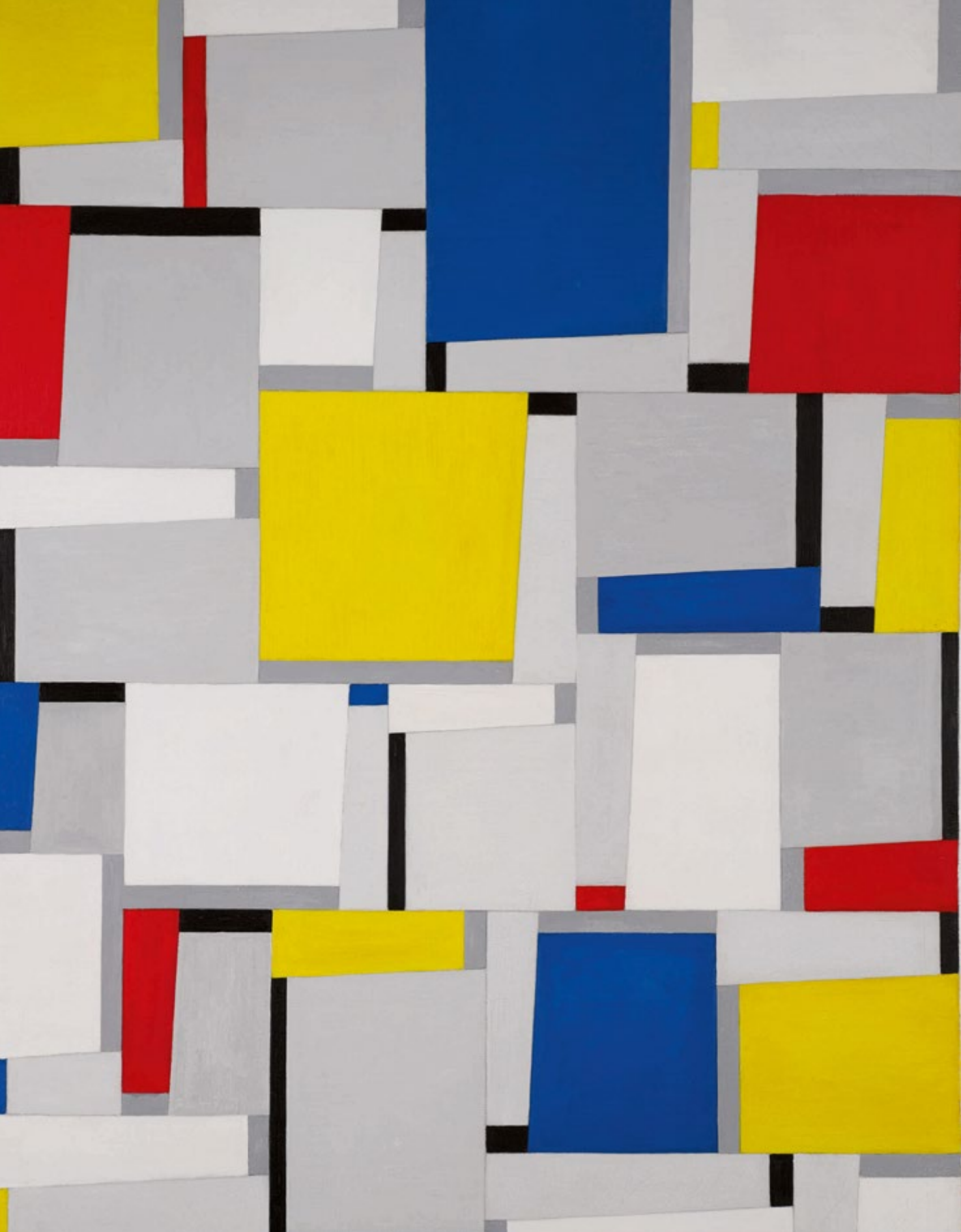
Theo van Doesburg
Stained-Glass Composition VIII
1918-1919



- Mondrian 100 75001
75002 75004 75005
- Mondrian 200 75001
75002 75003 75004 75005
- Mondrian 300 75001
75002 75003 75004 75005

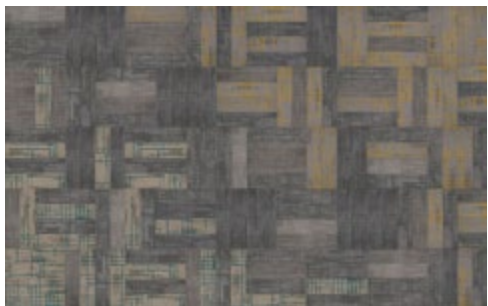


Mondrian 100 75001
75002 75003 75004
Mondrian 200 75001
75002 75003 75004
Mondrian 300 75001
75002 75003 75004



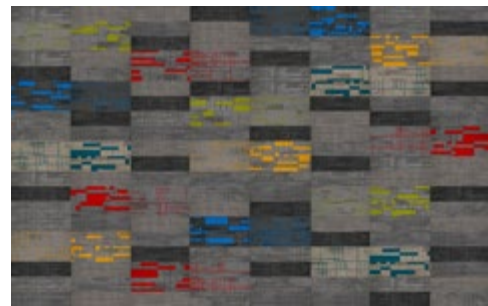
Page 16

- Mondrian 100 75005
- Mondrian 100 75001
- Mondrian 100 75002
- Mondrian 200 75005
- Mondrian 100 75005



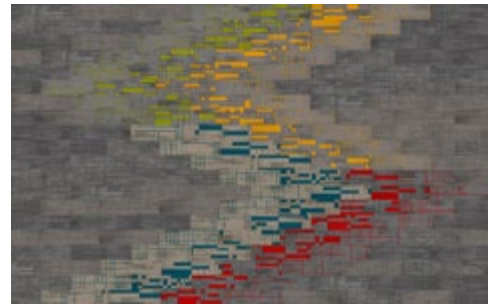
Page 22

- Mondrian 100 75001
- Mondrian 100 75002
- Mondrian 100 75003
- Mondrian 200 75001
- Mondrian 200 75002



Page 28

- Mondrian 100 75001
- Mondrian 100 75002
- Mondrian 100 75003
- Mondrian 100 75004
- Mondrian 100 75005
- Mondrian 200 75001
- Mondrian 200 75002



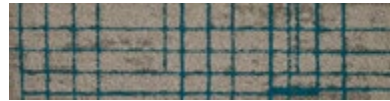
Page 30

- Mondrian 200 75003
- Mondrian 200 75004
- Mondrian 200 75005
- Mondrian 300 75001
- Mondrian 300 75002
- Mondrian 300 75003
- Mondrian 300 75004
- Mondrian 300 75005

COLORS



Mondrian 100 75001



Mondrian 200 75001



Mondrian 300 75001



Mondrian 200 75001 basic



Mondrian 300 75001 basic



Mondrian 100 75002



Mondrian 200 75002



Mondrian 300 75002



Mondrian 100 75003



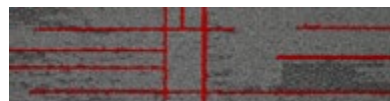
Mondrian 200 75003



Mondrian 300 75003



Mondrian 100 75004



Mondrian 200 75004



Mondrian 300 75004



Mondrian 200 75004 basic



Mondrian 300 75004 basic



Mondrian 100 75005



Mondrian 200 75005



Mondrian 300 75005

SPECIFICATIONS

| | |
|----------------------|--|
| Style Name: | Mondrian 100 Mondrian 200 Mondrian 300 |
| Construction: | Multi-level Loop |
| Fiber: | Voxflor Certified Nylon |
| Gauge: | 1/12" 1/10" 1/10" |
| Stitches: | 13 10 10 per inch |
| Average Pile Height: | 4.0m ± 0.5mm |
| Pile Weight: | 18 24 26 oz/yd ² |
| Backing: | EcoAir-Bac™ |
| Tile size: | 25cm*100cm |
| Area of Use: | Commercial - Heavy Duty |
| Antimicrobial: | Ultra-Fresh Treatment (Available) |
| Flammability: | ASTM E 648 Class I, GB8624-2012 B1(C) |
| Smoke Density: | ASTM E 662 Less than 450, GB/T 8627-1999 |
| Static Propensity: | AATCC-134 ≤3.5kV, GB/T 18044-2008 |



Ultra-Fresh is a registered trademark of Thomson Research Associates, Inc.

Your color story

VOXFLO^R
www.voxflor.com

Shanghai Headquarter
T +86 021 62989325

Milano Creative Studio
T +39 3885863150

China Branch Office
Beijing/ Guangzhou/ Shenzhen/ Xiamen
T 400 021 0790

